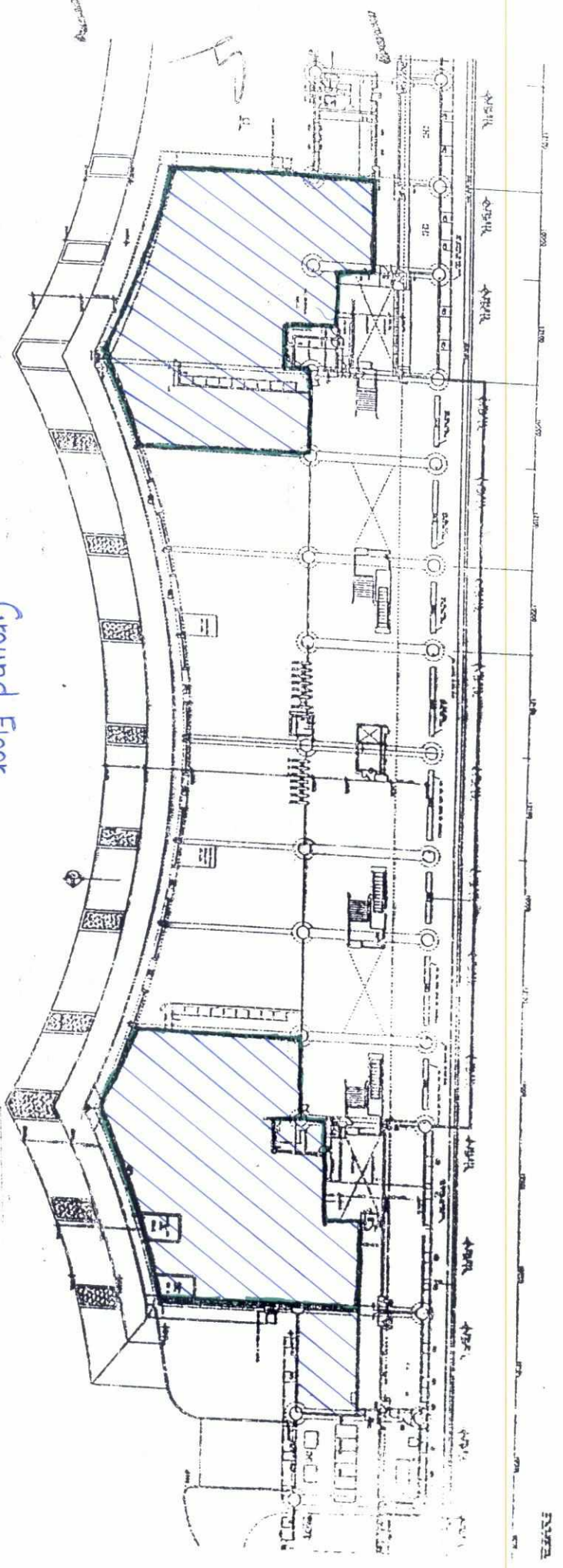


Seiampur

Seiampur Station Box Space

2



Left Wing

approx. 712 sqm.

Ground Floor

To Right Wing

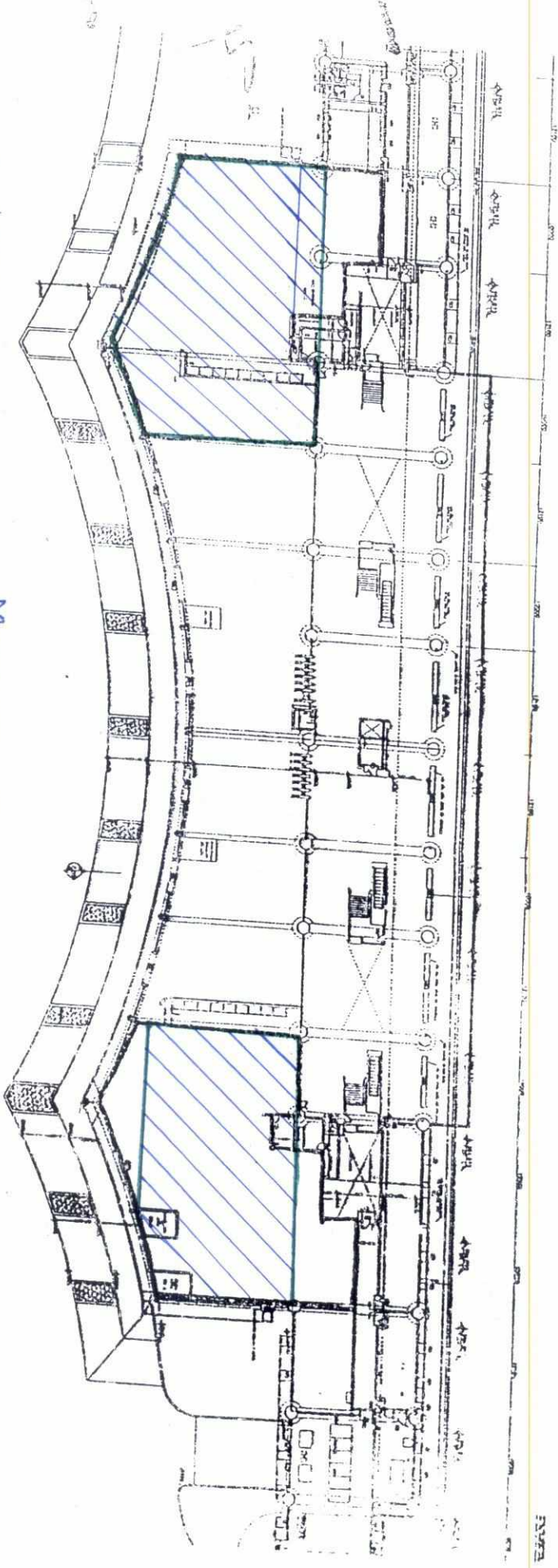
approx. 812 sqm.



Selempar

Selempar Station Box Spec

2



Left Wing
approx. 700 sqm.

Mezzanine Floor

To
Right Wing
approx. 406 sqm.

